

public health
making good health happen

‘DYING TO BE WARM’

**Karen Wright
Older Adults Lead
NHS Worcestershire**

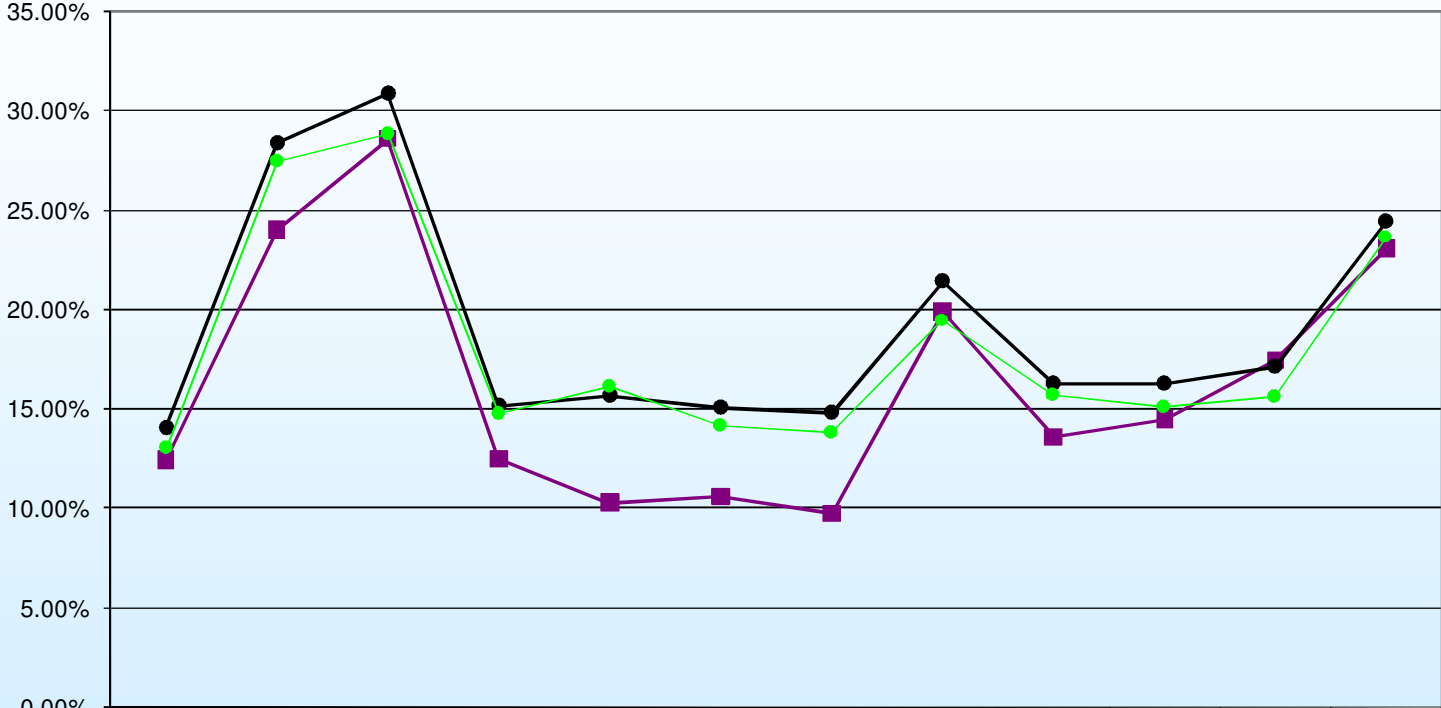
Excess Winter Deaths the Facts

- Excess winter deaths are related to circulatory and respiratory diseases;
- The 85+ age group are most at risk;
- There is a weak link with deprivation and with winter falls;
- Winter warmth measures that improve insulation also protect against summer heat gain;

Excess Winter Deaths the Facts

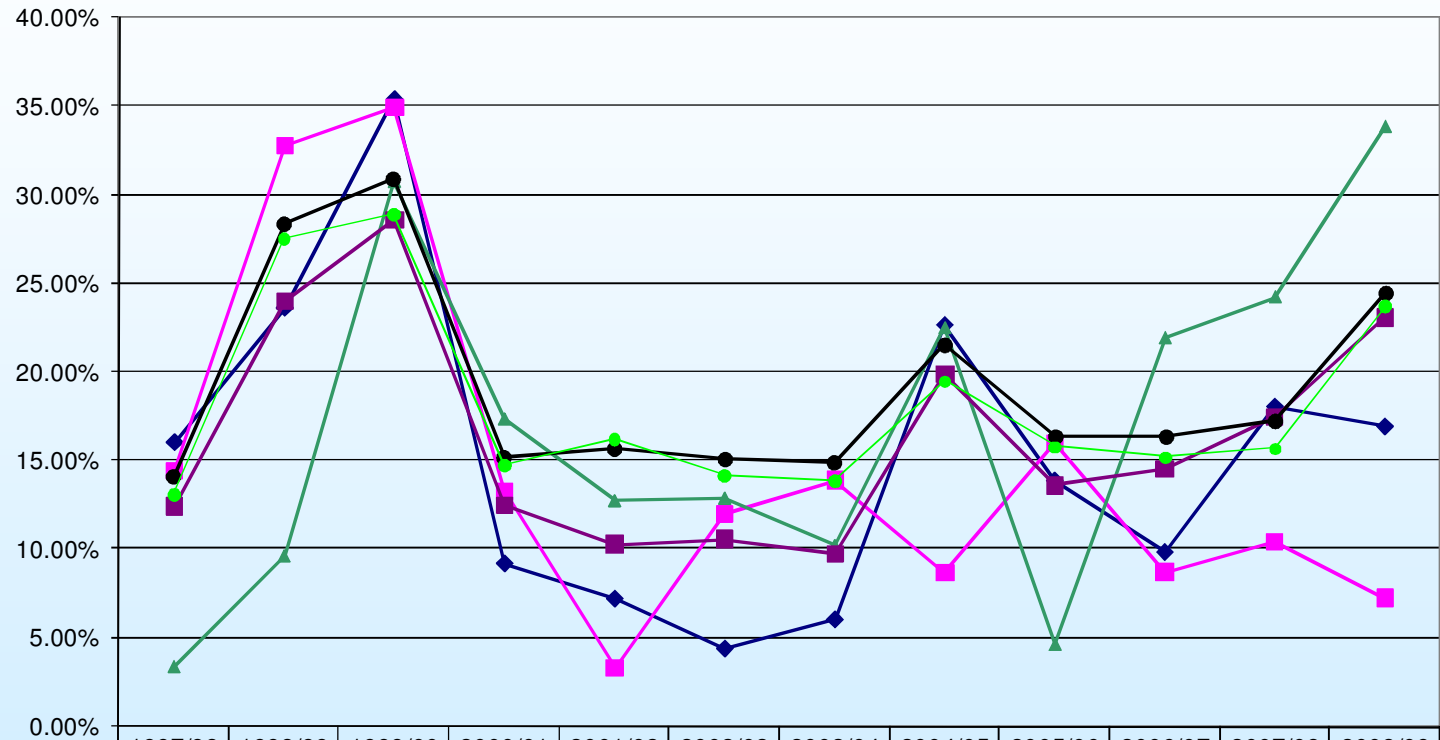
- CMO (2005) highlights excess winter deaths index West Midlands as higher than any other region at 21.6% more deaths in the winter months than the average expected.
- Excess winter deaths: The number of deaths in the winter months (December- March) minus the average number of deaths during the preceding four months (August to November) and subsequent four months (April- July). The year runs from August to April.

Excess Winter Deaths Index for Worcestershire compared to West Midlands and E&W



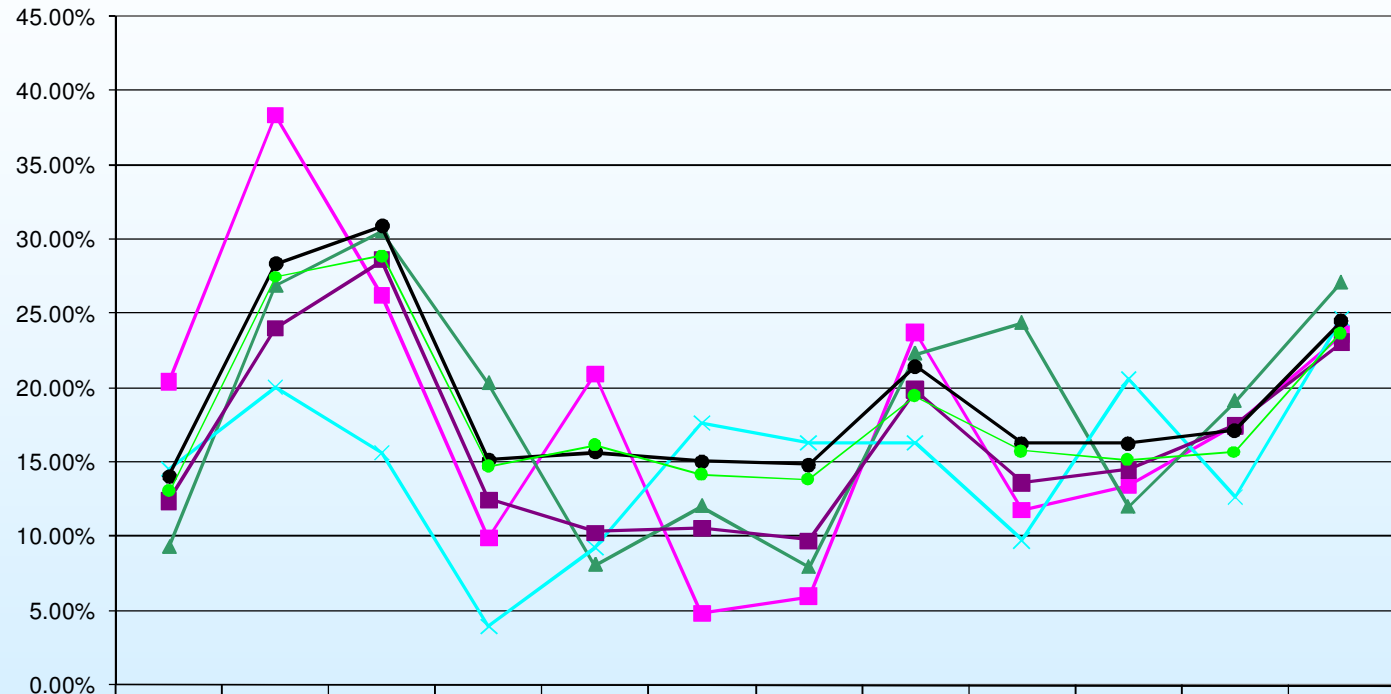
	1997/98	1998/99	1999/00	2000/01	2001/02	2002/03	2003/04	2004/05	2005/06	2006/07	2007/08	2008/09
—■— Worcestershire	12.46%	24.04%	28.60%	12.53%	10.31%	10.61%	9.78%	19.91%	13.64%	14.53%	17.50%	23.09%
—●— West Midlands	14.10%	28.40%	30.90%	15.20%	15.70%	15.10%	14.90%	21.50%	16.3%	16.3%	17.2%	24.5%
—●— England, Wales and elsewhere	13.10%	27.50%	28.90%	14.80%	16.20%	14.20%	13.90%	19.50%	15.8%	15.2%	15.7%	23.7%

Excess Winter Deaths Index – North Worcestershire CDs compared to West Midlands and E&W



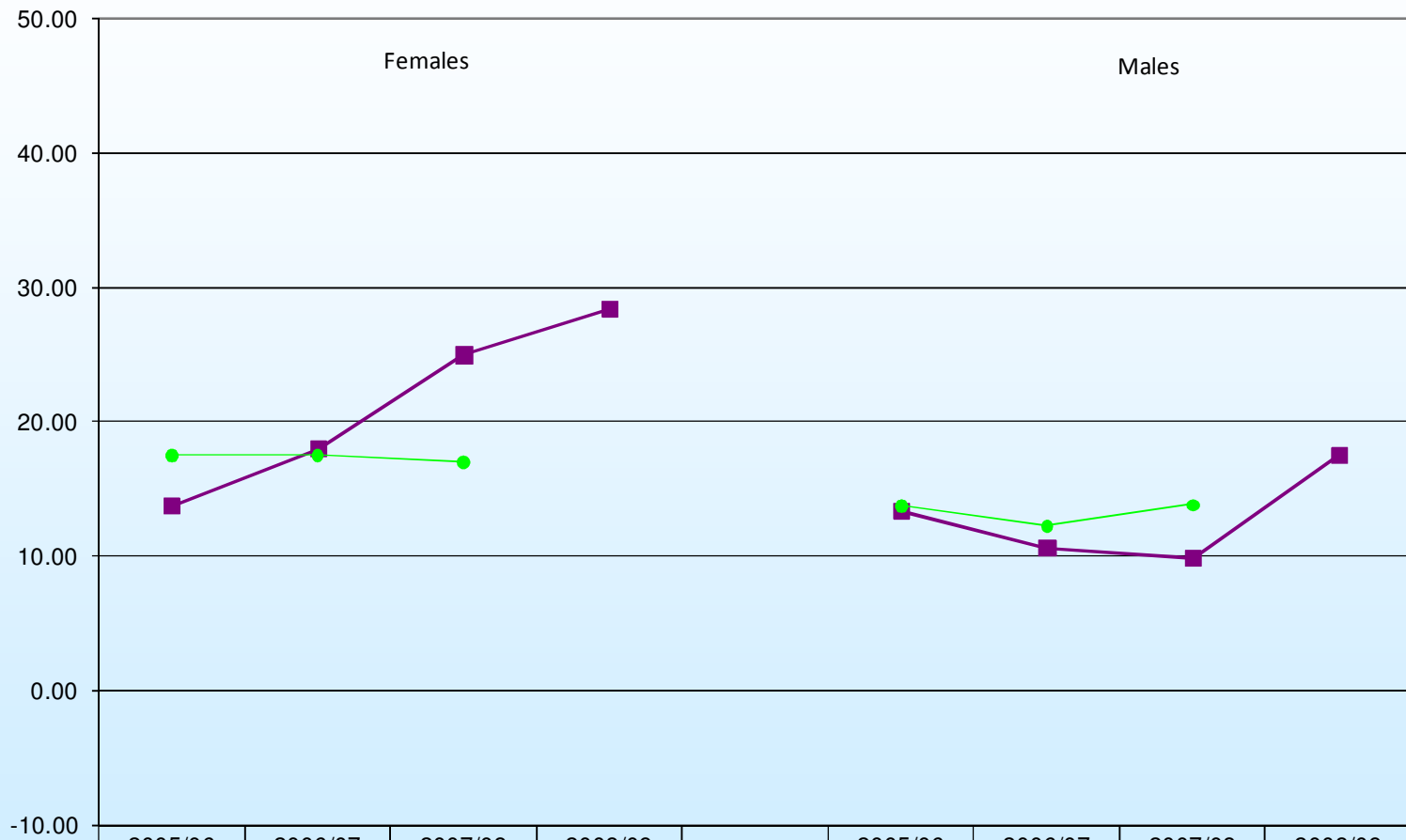
	1997/98	1998/99	1999/00	2000/01	2001/02	2002/03	2003/04	2004/05	2005/06	2006/07	2007/08	2008/09
◆ Wyre Forest	16.02%	23.62%	35.40%	9.17%	7.18%	4.36%	6.00%	22.65%	13.86%	9.82%	18.03%	16.91%
■ Redditch	14.44%	32.78%	34.92%	13.27%	3.29%	12.00%	13.87%	8.62%	15.98%	8.68%	10.40%	7.23%
▲ Bromsgrove	3.43%	9.67%	30.76%	17.38%	12.77%	12.91%	10.24%	22.52%	4.67%	21.96%	24.26%	33.88%
■ Worcestershire	12.46%	24.04%	28.60%	12.53%	10.31%	10.61%	9.78%	19.91%	13.64%	14.53%	17.50%	23.09%
● West Midlands	14.10%	28.40%	30.90%	15.20%	15.70%	15.10%	14.90%	21.50%	16.3%	16.3%	17.2%	24.5%
● England, Wales and elsewhere	13.10%	27.50%	28.90%	14.80%	16.20%	14.20%	13.90%	19.50%	15.8%	15.2%	15.7%	23.7%

Excess Winter Deaths Index - South Worcestershire CDs compared to West Midlands and E&W



	1997/98	1998/99	1999/00	2000/01	2001/02	2002/03	2003/04	2004/05	2005/06	2006/07	2007/08	2008/09
—■— Worcester City	20.46%	38.40%	26.30%	9.93%	20.98%	4.87%	6.01%	23.77%	11.82%	13.46%	17.56%	23.66%
—▲— Wychavon	9.29%	26.89%	30.56%	20.34%	8.11%	12.07%	7.95%	22.33%	24.40%	12.00%	19.14%	27.12%
—×— Malvern Hills	14.60%	20.14%	15.67%	3.99%	9.27%	17.69%	16.37%	16.33%	9.78%	20.66%	12.68%	24.73%
—■— Worcestershire	12.46%	24.04%	28.60%	12.53%	10.31%	10.61%	9.78%	19.91%	13.64%	14.53%	17.50%	23.09%
—●— West Midlands	14.10%	28.40%	30.90%	15.20%	15.70%	15.10%	14.90%	21.50%	16.3%	16.3%	17.2%	24.5%
—●— England, Wales and elsewhere	13.10%	27.50%	28.90%	14.80%	16.20%	14.20%	13.90%	19.50%	15.8%	15.2%	15.7%	23.7%

Excess Winter Deaths Index by Gender for Worcestershire compared to E&W

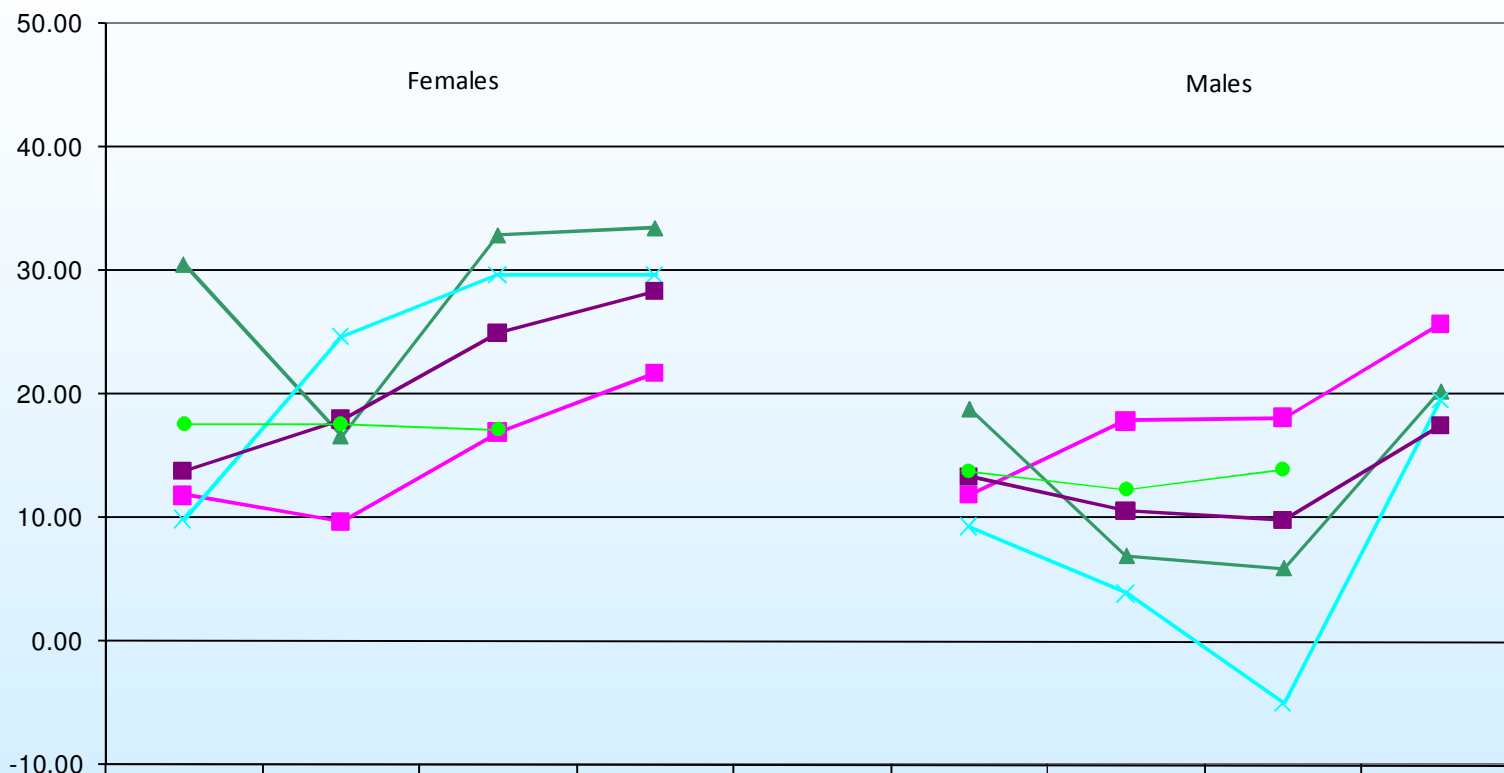


—■— Worcestershire	13.81	18.04	24.99	28.39		13.38	10.63	9.92	17.56
—●— England and Wales	17.6	17.6	17.1			13.8	12.3	13.9	

Excess Winter Deaths Index by Gender for North Worcestershire CDs compared to E&W

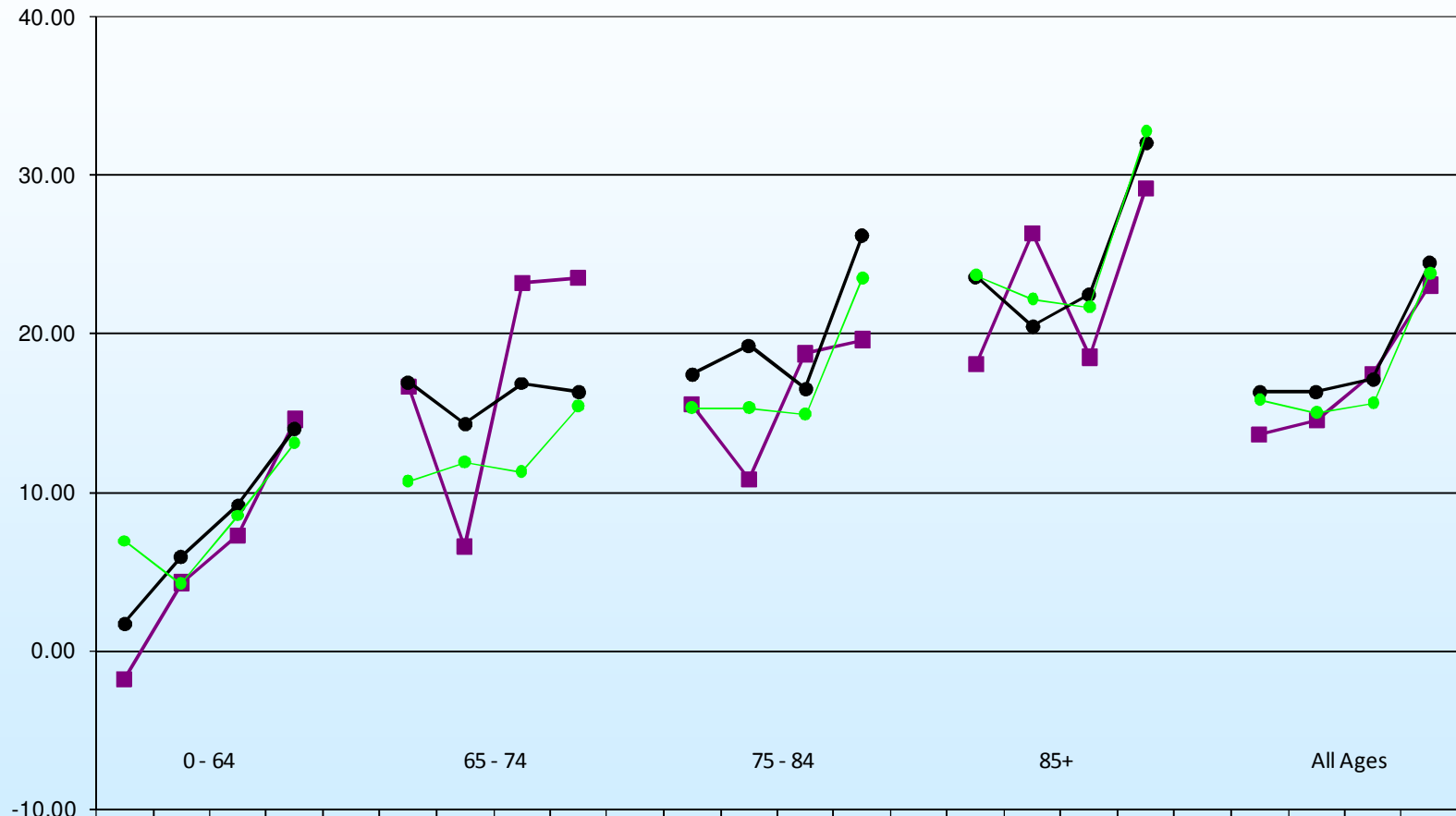


Excess Winter Deaths Index by Gender for South Worcestershire CDs compared to E&W



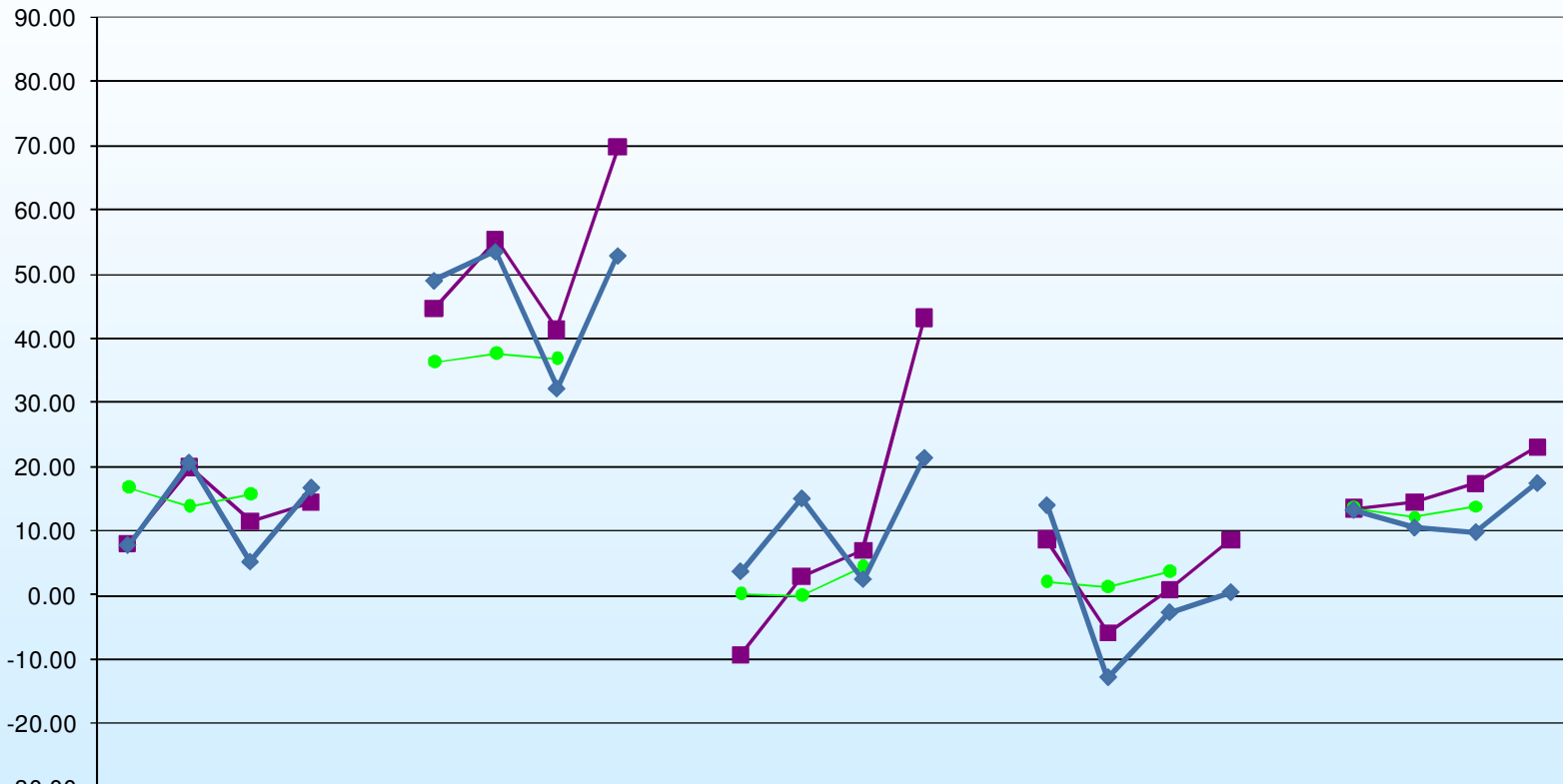
	2005/06	2006/07	2007/08	2008/09		2005/06	2006/07	2007/08	2008/09
—■— Worcester City	11.81	9.68	16.94	21.77		11.84	17.84	18.12	25.69
—▲— Wychavon	30.56	16.62	32.94	33.52		18.82	6.91	5.92	20.24
—×— Malvern Hills	9.88	24.66	29.66	29.66		9.29	3.86	-5.04	19.57
—■— Worcestershire	13.81	18.04	24.99	28.39		13.38	10.63	9.92	17.56
—●— England and Wales	17.6	17.6	17.1			13.8	12.3	13.9	

Excess Winter Deaths Index by Age Group for Worcestershire compared to West Midlands and E&W



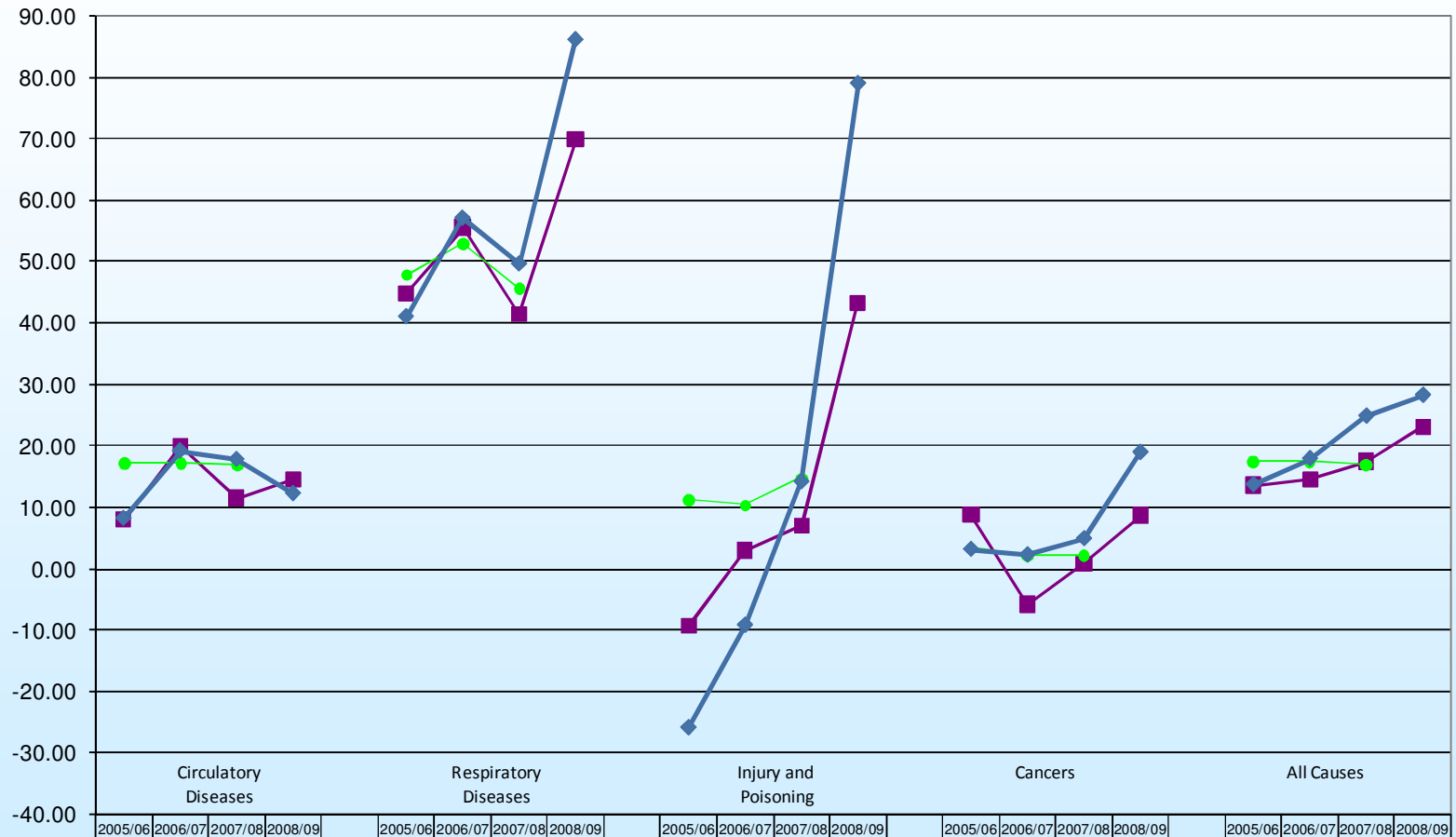
	2005/06	2006/07	2007/08	2008/09		2005/06	2006/07	2007/08	2008/09		2005/06	2006/07	2007/08	2008/09		2005/06	2006/07	2007/08	2008/09		2005/06	2006/07	2007/08	2008/09
Worcestershire	-1.82	4.27	7.28	14.59		16.70	6.53	23.25	23.55		15.57	10.79	18.76	19.64		18.12	26.35	18.55	29.20		13.60	14.53	17.50	23.09
West Midlands	1.7	5.9	9.2	14		17	14.3	16.9	16.3		17.5	19.3	16.5	26.2		23.6	20.5	22.5	32.1		16.3	16.3	17.2	24.5
England and Wales	6.9	4.2	8.5	13.1		10.7	11.9	11.3	15.4		15.3	15.3	14.9	23.5		23.7	22.2	21.7	32.8		15.8	15	15.6	23.8

Excess Winter Deaths Index for Males by Underlying Cause of Death in Worcestershire compared to E&W



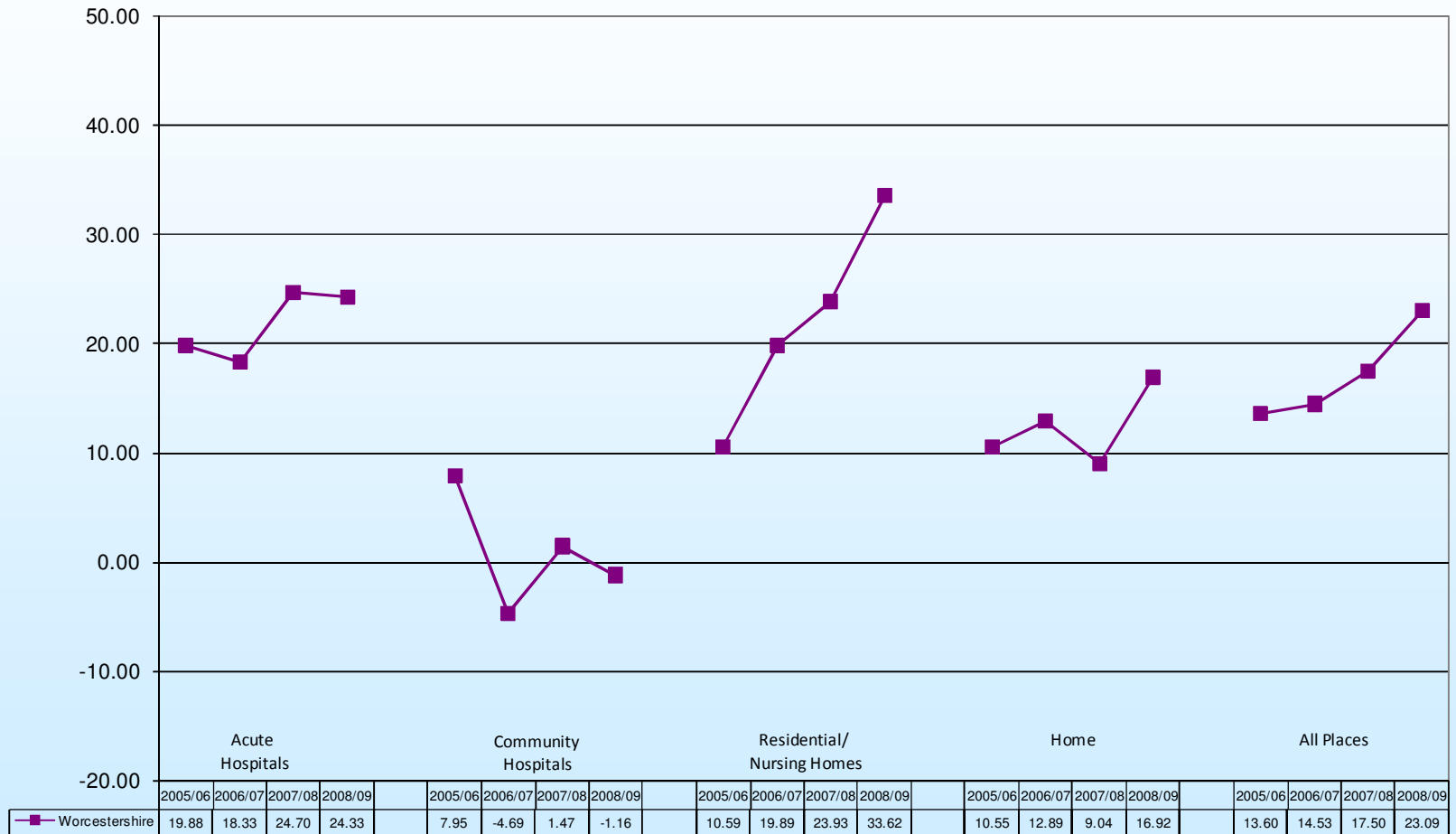
	Circulatory Diseases				Respiratory Diseases				Injury and Poisoning				Cancers				All Causes			
	2005/06	2006/07	2007/08	2008/09	2005/06	2006/07	2007/08	2008/09	2005/06	2006/07	2007/08	2008/09	2005/06	2006/07	2007/08	2008/09	2005/06	2006/07	2007/08	2008/09
Worcestershire Persons	8.10	20.00	11.57	14.56	44.78	55.56	41.49	69.91	-9.22	3.03	7.09	43.31	8.78	-5.77	0.90	8.72	13.60	14.53	17.50	23.09
England and Wales Males	17.0	14.0	15.8		36.4	37.8	36.9		0.5	0.1	4.6		2.3	1.4	3.8		13.8	12.3	13.9	
Worcestershire Males	7.90	20.77	5.30	16.87	49.17	53.68	32.32	53.05	3.80	15.15	2.56	21.52	14.11	-12.75	-2.60	0.55	13.38	10.63	9.92	17.56

Excess Winter Deaths Index for Females by Underlying Cause of Death in Worcestershire compared to E&W



Worcestershire Persons	8.10	20.00	11.57	14.56		44.78	55.56	41.49	69.91		-9.22	3.03	7.09	43.31		8.78	-5.77	0.90	8.72		13.60	14.53	17.50	23.09
England and Wales Females	17.3	17.2	17.1			48.0	53.1	45.8			11.4	10.4	14.8			3.4	2.3	2.2			17.6	17.6	17.1	
Worcestershire Females	8.31	19.32	17.92	12.35		41.18	57.21	49.77	86.30		-25.81	-9.09	14.29	79.17		3.27	2.37	5.01	19.07		13.81	18.04	24.99	28.39

Excess Winter Deaths Index by Place of Death in Worcestershire



What does this tell us

- Questions raised about Bromsgrove;
- Cautious about small numbers;
- We can use data to prioritise where to focus efforts;
- We need to build on good practice which reduces the risks of excess winter deaths;
- We all have a role to play;